

Prunty Hall



Opening in 1960, Prunty (then East Hall) was a departure from previous halls in style with an emphasis on including learning spaces within the living spaces. Prunty Hall is named after Stephens' first dean of students, Merle Prunty. His daughter, Mary Lee Prunty Johnston, was also an active alumna. Prunty is part of the North Residential Quad.

All Prunty rooms are on community style floors with bathrooms which house multiple sinks, toilet stalls and shower stalls; all beds are standard twins. (A great advantage to community style bathrooms is they are cleaned for you.)

There are two enclosed stair towers at the east and west sides of the building.

COMMON ROOMS

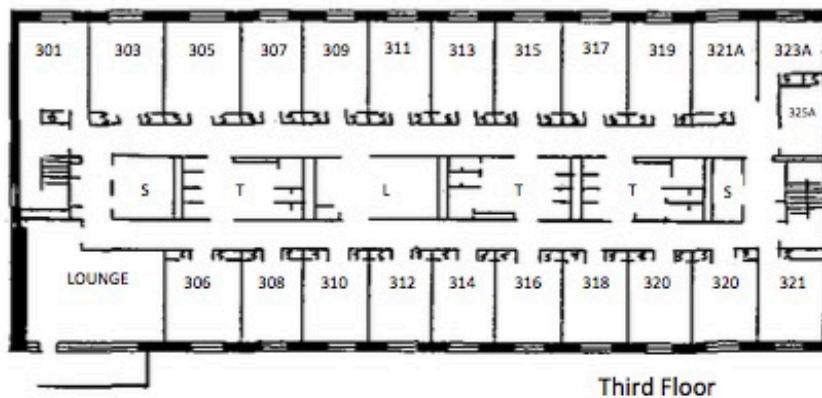
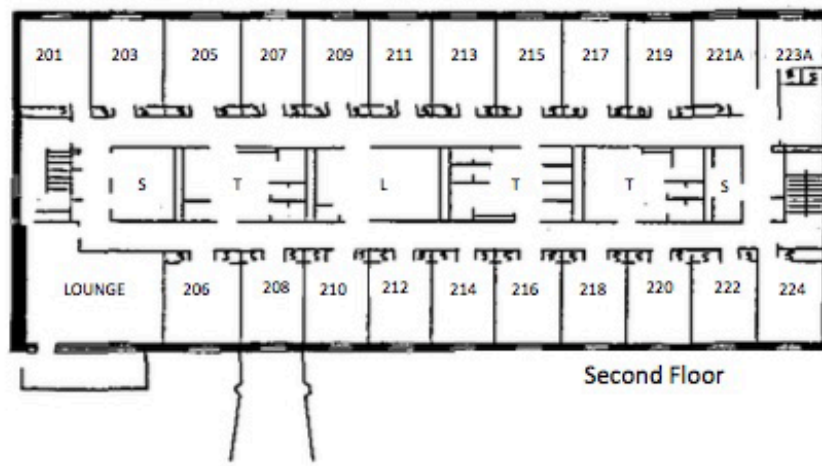
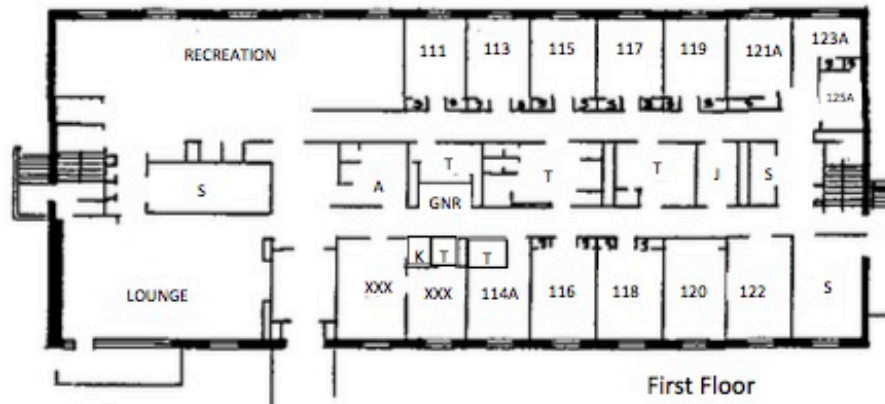
There is a main lounge adjacent to the main entrance on the first floor. There are additional lounges at the southwest corner of the second and third floors.

Laundry facilities are located on each floor in the middle of the building. (Remember laundry machines are free at Stephens!)

A kitchen is located in the northwest corner of the building on the main level. It contains an electric range, fridge and microwave oven. There is an additional microwave located on each floor, with the exception of the first floor.



Prunty Hall: Floor Plans



OFFICE OF RESIDENCE LIFE

Phone: (573) 876-7230, Ext. 4230 | Fax: (573) 876-7160
Campus Box: 2092 | Campus Location: 222 Stamper Commons
Email: reslife@stephens.edu